





iCON



USB MIDI DJ Controller with
OptiSen™ optical scratch wheels





	CAUTION RISK OF ELECTRIC SHOCK DO NOT OPEN RISQUE DE CHOC ELECTRIQUE NE PAS OUVRIR			The lightning flash with arrowhead symbol within an equilateral triangle is intended to alert the user to the presence of uninsulated dangerous voltage within the product's enclosure, that may be of sufficient magnitude to electric shock to persons. Le symbole clair avec point de flèche à l'intérieur d'un triangle équilatéral est utilisé pour alerter l'utilisateur de la présence à l'intérieur du coffret de voltage dangereux non isolé d'ampleur suffisante.
	CAUTION: TO REDUCE THE RISK OF ELECTRIC SHOCK DO NOT REMOVE COVER (OR BACK) NO USER-SERVICEABLE PARTS INSIDE REFER SERVICING TO QUALIFIED PERSONNEL			exclamation point within an equilateral triangle is intended to alert the user of the presence of important operating and maintenance (servicing) instructions in the literature accompanying the appliance. Le point d'exclamation à l'intérieur d'un triangle équilatéral est employé pour alerter les utilisateurs de la présence d'instructions importantes pour le fonctionnement et l'entretien (service) dans le livret d'instruction accompagnant l'appareil.
	ATTENTION: POUR EVITER LES RISQUES DE CHOC ELECTRIQUE: NE PAS ENLEVER LE COUVERCLE, AUCUN ENTRETIEN DE PIECES INTERIEURES PAR L'USAGER. CONFIER L'ENTRETIEN AU PERSONNEL QUALIFIE. AVIS: POUR EVITER LES RISQUES D'INCENDIE OU D'ELECTROCUTION, N'EXPOSEZ PAS CET ARTICLE A LA PLUIE OU A L'HUMIDITE.			

Important Safety Instructions

1. Read these instructions.
2. Keep these instructions.
3. Heed all warnings.
4. Follow all instructions.
5. Do not use this apparatus near water.
6. Clean only with dry cloth.
7. Do not block any ventilation openings. Install in accordance with the manufacturer's instructions.
8. Do not install near any heat sources such as radiators, heat registers, stoves, or other apparatus (including amplifiers) that produce heat.
9. Only use attachments/accessories specified by the manufacturer.

Contents

Introduction	
What's in the package.....	1
Register your ICON ProAudio product to your personal account	2
Features	3
Front Panel Layout	4-5
Side Panel Layout	6
Getting Started	
Connecting your iDJ controller.....	6-7
Installing iMap™ Software for Mac OSX	8
Installing iMap™ Software for Windows	9-10
Assigning MIDI functions with iMap™	11
iMap™ iDJ software panel	12-13
Restore the factory default settings	13
Daisy chain your iDJ to other i-series controllers	14
Specifications	15
Services	16



Introduction

Thank you for purchasing the ICON iDJ USB MIDI controller. We sincerely trust this product will provide years of satisfactory service, but if anything is not to your complete satisfaction, we will endeavor to make things right.

In these pages, you'll find a detailed description of the features of the iDJ, as well as a guided tour through its front and rear panels, step-by-step instructions for their setup and use, and full specifications.

Please register the product on our website at the below link www.iconproaudio.com/registration:

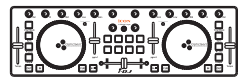
Please follow the step by step procedures. Start by inputting the device's serial number as well as your personal information, etc. By registering your product online, you will be entitled to service and after-sales support at our Help Center by visiting our website at www.iconproaudio.com. Also, all the registered products under your account will be listed on your personal product page where you will find updated information such as firmware/driver upgrades, software bundles, user manual downloads, etc. for your device.

As with most electronic devices, we strongly recommend you retain the original packaging. In the unlikely event the product must be returned for servicing, the original packaging (or reasonable equivalent) is required.

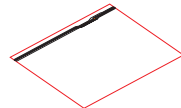
With proper care and adequate air circulation, your iDJ will operate without any trouble for many years.

What's in the package?

- iDJ USB MIDI controller x 1
- Quick Start Guide
- USB2.0 Cable



iDJ



Quick Start Guide



USB2.0 Cable

Register your ICON ProAudio product to your personal account

1. Check serial number of your device

Please go to [http:// iconproaudio.com/registration](http://iconproaudio.com/registration) or scan the QR code below.



Input your device's serial number and the other information on the screen. Click "Submit".

A message will pop up showing your device information such as model name and its serial number - Click "Register this device to my account" or if you see any other message, please contact our after-sales service team

2. Log in to your personal account page for existing user or sign up for new user

Existing user: Please log into your personal user page by inputting your user name and password.

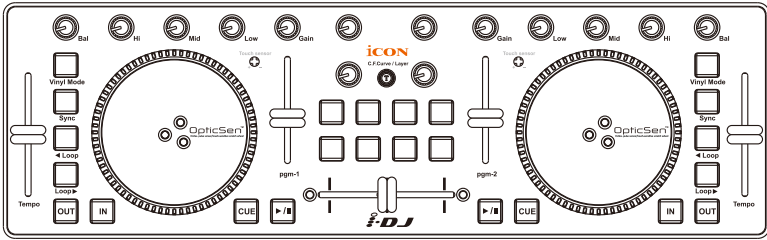
New user: Please click "Sign Up" and fill in all the information.

3. Download all useful materials

All your registered devices under your account will show on the page. Each product will be listed along with all its available files such as drivers, firmware, user manual in different languages and bundled software etc. for download.

Please make sure you have download the necessary files such as driver before you begin device installation.

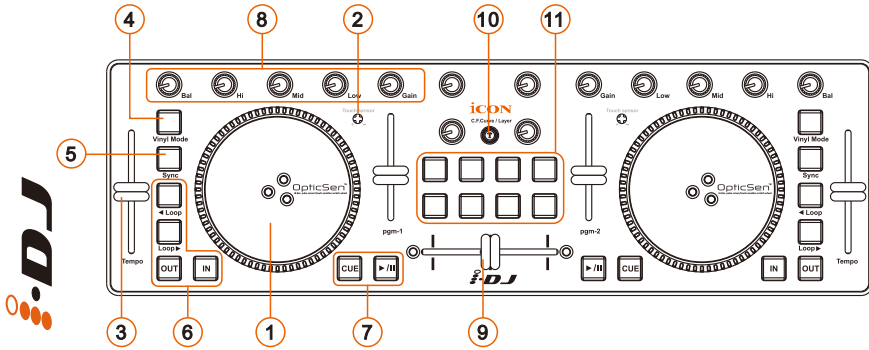
Features



Main features include:

- Touch-sensitive scratch wheels with high resolution pulse sensor
Touch sensor scratch wheel platters give high resolution to experiencing an analog feel when scratching and mixing.
- Touch wheel sensitivity adjustable
- Vertical volume control faders
- Vertical tempo control faders
- Horizontal cross fader control
- 2x3-band EQ control knobs - Hi, Mid and Low (assignable)
- Balance control knobs (assignable)
- Gain control knobs (assignable)
- 8 assignable backlit buttons including "Vinyl Mode", "Sync", "Loop >", "Loop <", "Out", "In" and "Cue".
- 4 extra assignable knobs for effect control
- 8 extra assignable backlit buttons
- iMap™ midi mapping software included for reassigning midi mapping
- Extremely compact and perfect match with MacBook™
- Class-compliant with Windows XP, Vista (32-bit), and Mac OS X
- USB bus-powered
- Available in black and white
- Different colors aluminum cover is available (optional)
- Custom laser-engraving service for aluminum cover is available at online purchase (optional)

Front Panel Layout



- 1 Touch-sensitive scratch wheel with high resolution pulse sensor**
The scratch wheel is constructed with high resolution pulse sensor with touch-sensitive and non-sensitive elements. These together enable user control functions such as “search”, “pitch bend”, “stop & go”, and “scratch” etc. with high accuracy and effectively.
- 2 Scratch wheel touch sensitivity level control**
Adjust the sensitivity of the scratch wheels for different environments and users. Rotate it with a small screwdriver while touching the scratch wheel until the backlight of the scratch wheel changes from blue to red.
- 3 Tempo fader**
Adjust the tempo (playback speed) of each deck at your software.
- 4 Vinyl mode button**
Press to activate the vinyl mode of each desk at your software.
- 5 Sync button**
Press this button to activate the Auto-Sync function of each desk at your software.
- 6 Loop control buttons (Loop<, Loop>, IN & OUT)**
These buttons control the corresponding looping buttons found on each desk at your software.
- 7 Transport buttons (CUE, Play/Pause)**
Press to activate the CUE, Play/Pause functions of each desk at your software.
- 8 Mixer knobs (Bal, Hi, Mid, Low & Gain)**
These adjust the channel balance, gain, the high-frequency, mid-range, low-frequency EQ settings of each desk at your software.

Front Panel Layout

9 Crossfader

This slider controls the crossfader at your software. Slide to control the transition between songs. The crossfader curve setting is adjustable. Please refer to the “C.F.Curve” button below for details.

10 C.F.Curve / Layer button

This is a multi functional button. It can be used to adjust the crossfader curve, switching the layer from one to four or restore the iDJ to factory default settings.

Adjust the crossfader curve

Activate the button (red light turns on) and slide the crossfader to your preferred cross point. This would be your “A” cross point and “B” cross point will be mirror symmetric. The section between your cross points “A” & “B” is the center value.

Tip: In general, a gentle curve is more suitable for long mixes (larger distance between A/B as diagram A shown) and a sharp curve is more suitable for scratching (i.e. less distance between A/B as diagram B shown).

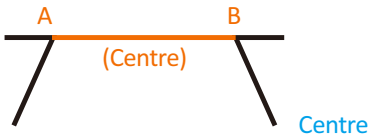


Diagram A

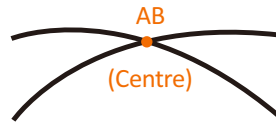


Diagram B

Switching between the 4 layers

You may pre-map your iDJ to 4 layers with different midi mapping at each layer. To switch between these layers, activate the Layer button and press the 4 buttons below to change the layers from 1 to 4.

Restore iDJ to factory default

Press and hold the button for more than 3 seconds (all the iDJ lights will flash one time), this will restore all iDJ settings to factory default values.

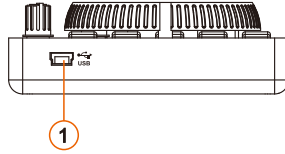
11 User defined buttons

These buttons are intended for user to self-define the usage. Please use iMap software to assign their functions.

Tip: Except “Vinyl Mode”, “C.F.Curve”, “CUE” & “Play/Pause” buttons are not assignable, all other buttons, sliders and knobs on your iDJ are assignable with the provided iMap MIDI mapping software.



Side Panel Layout



① USB port (B-Type)

Functions as a MIDI port to your notebook (or computer) and compatible software. Also provides power to your iDJ.

Getting Started

Connecting your iDJ controller

① Connect the iDJ to your Mac/PC via the USB port

Choose a USB port on your Mac/PC and insert the wide (flat) end of the USB cable. Connect the cable's small jack end to the iDJ. Your Mac/PC should automatically “detect” the new hardware and notify you that it is ready to use.

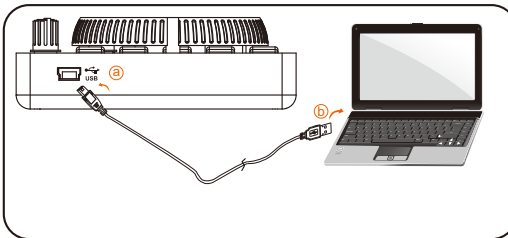


Diagram 1



Diagram 2

② Setup your DJ software

Activate the ICON iDJ controller in your DAW or MIDI software using “MIDI setup” or “MIDI devices”.

(Note: Every application does this a little different, so refer to your software user manual for the settings.)

③ Import the preset template for the DJ software

To avoid all hassles to set the midi mapping for your DJ software. We have created preset templates on some DJ software. By importing this template to your DJ software, your iDJ is ready to use immediately. These templates are stored on the CD with your package under the “Templates” folder. Also, we will update and create more templates for different DJ software. Please check our official website for updates.

(Note: You may reassign your midi mapping with the provided iMap™ software. (Refer to page 10 for "Assign the MIDI functions with "iMap™" software")



Installing iMap™ Software for MAC OS X

Please follow the procedures below step-by-step to install your iMap™ software to Mac OS X

- ① Turn on your MAC.
- ② Download the Mac iMap from your Personal User Page at www.iconproaudio.com

After you downloaded the file, please click it to start the installation process.

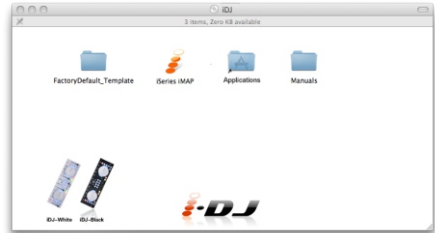


Diagram 1

- ③ iMap “Device select” window pop-up, click the device button accordingly to launch the iMap™ software.



Diagram 2

Installing iMap™ Software for Windows

Please follow the procedures below step-by-step to install your iMap™ software.

- 1 Turn on your PC.
- 2 Download the Mac iMap from your Personal User Page at www.iconproaudio.com

After you downloaded the file, please click it to start the installation process.

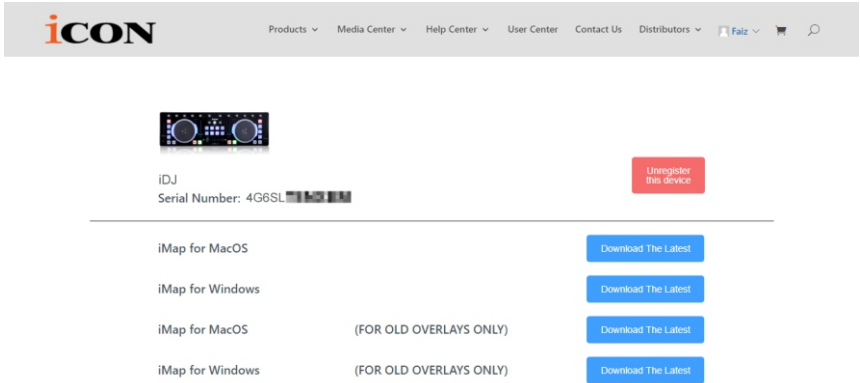


Diagram 1

- 3 Setup Wizard appear
Setup wizard appears, please click "Next"

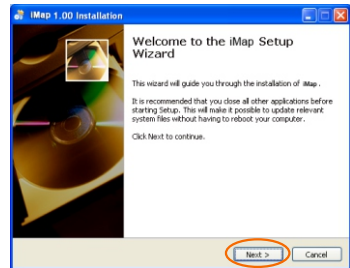


Diagram 2

- 4 Choose Install Location
Choose your preferred install location for iMap™ or use the default location and click "Next"

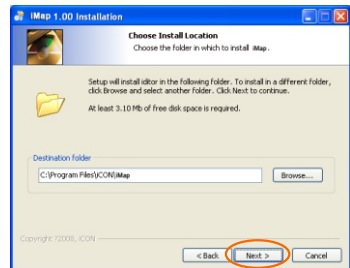


Diagram 3

Installing iMap™ Software for Windows(continues)



5 Select shortcut

Select the start menu folder in which you would like to create the iMap™ shortcut. Then click "Next"

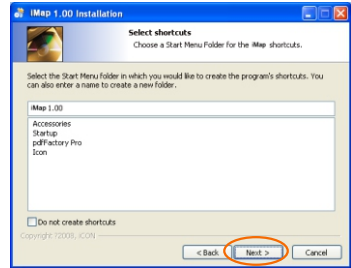


Diagram 4

6 Create a shortcut on your desktop

Please untick the box if you do not want to place a shortcut icon on your desktop for iMap™, otherwise click "Next"

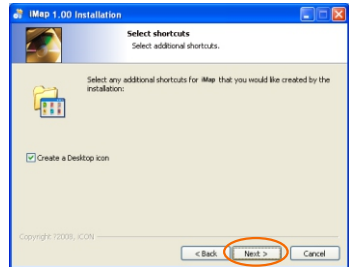


Diagram 5

7 iMap™ started to install

The iMap™ installation has now started, wait for it to finish. Then click "Finish"

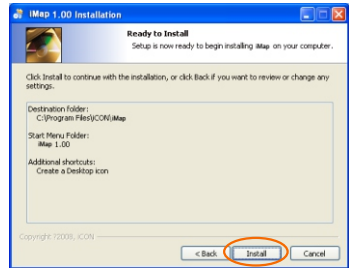


Diagram 6

8 Installation finished

Click "Finish" to complete the iMap™ software installation.

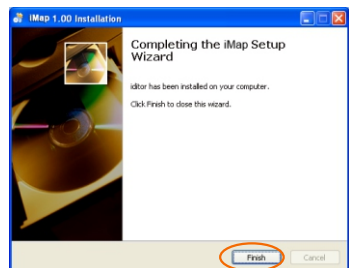


Diagram 7

Assigning MIDI functions with iMap™

You can use iMap™ to assign the MIDI functions of your iDJ easily. Please launch the iMap™ software, a device selector screen will appear as shown in diagram 1. Then click the "iDJ" button.



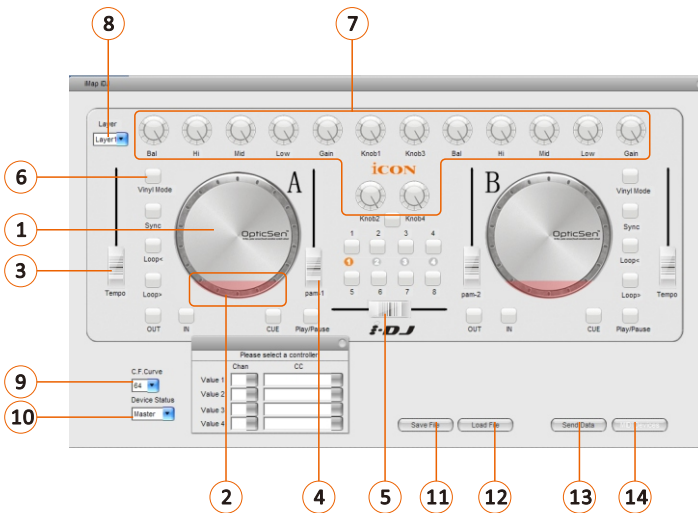
Diagram 1

Note: If your iDJ is not connected to your Mac/PC, a message of "There are no MIDI input devices" will appear. Please connect iDJ to your Mac/PC with the provided USB cable.



Diagram 2

iMap™ iDJ software panel



iMap™ iDJ software panel(continues)



① Assign the MIDI channel & CC number to the scratch wheel (A & B)

Select your desired MIDI channel (1-16) and CC number (0-127) in the pull-down menu for each scratch wheel. There are four values that you could set for each scratch wheel as below:

- 1) Value 1: Setting the midi data for rotating the scratch wheel (right or left direction) with “Vinyl Mode” button activated.
- 2) Value 2: Setting the midi data for rotating the scratch wheel (right or left direction)
- 3) Value 3: Setting the midi data for rotating the scratch wheel's rubber ring (right direction).
- 4) Value 4: Setting the midi data for rotating the scratch wheel's rubber ring (left direction).

② Assign the MIDI channel & CC number to the touch-sensitive element (scratch wheel A & B)

Select your desired MIDI channel (1-16) and CC number (0-127) in the pull-down menu for the touch sensitive element.

③ Assign the MIDI channel & CC number to the fader (Tempo)

Select your desired MIDI channel (1-16) and CC number (0-127) in the pull-down menu for the fader. There are two values that you can set for this fader as below:

- 1). Value 1 – Setting the midi data for sliding the fader.
- 2). Center – Setting the midi data for sliding past the center position of the fader.

④ Assign the MIDI channel & CC number to the fader (PGM1 & PGM 2)

Select your desired MIDI channel (1-16) and CC number (0-127) in the pull-down menu for the fader.

⑤ Assign the MIDI channel & CC number to the fader (crossfader)

Select your desired MIDI channel (1-16) and CC number (0-127) in the pull-down menu for the fader.

⑥ Assign the MIDI channels and CC number to the control buttons

There are 24-control buttons on iDJ you may assign. Select your desired MIDI channel (1-16) and CC number (0-127) for the control buttons.

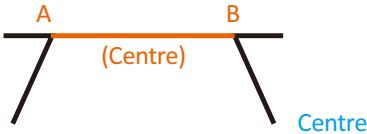
⑦ Assign the MIDI channels and CC number to the knobs

There are 14 control knobs on iDJ you may assign. Select your desired MIDI channel (1-16) and CC number (0-127) for the knobs. There are two values that you can set for each knob as below:

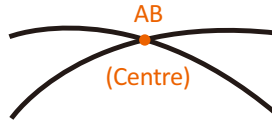
- 1). Value 1 – Setting the midi data for rotating the knob.
- 2). Center – Setting the midi data for rotating past the center position of the knob.

iMap™ iDJ software panel(continues)

- ⑧ **Select the 4 different layers and choose the desired settings for each layer**
You may have 4 different “Layers” for different applications. Each “Layer” can have its own control settings.
- ⑨ **Select the crossfader curve value**
You may select the curve characteristic from 0 to 64 for the crossfader.



C.F. curve set to value “0”



C.F. curve set to value “64”

- ⑩ **Set iDJ as a Master or Slave device**
You may cascade your iDJ with other ICON's i-series controllers (refer to p.13 for details). Set the iDJ as “Master” device if used on its own. Set it to “Slave” if it is connect to another i-series controller.

⑪ **“Save file” button**

Click this button to save your current settings for the iDJ. The file is an “.icon” file.

⑫ **“Load file” button**

Click this button to load a previously saved “.icon” setting file for your iDJ.

⑬ **“Send Data” button**

Click this button to upload the iMap™ software settings to your iDJ via USB connection.

(Note: You must have connected your iDJ to your Mac/PC, otherwise the settings upload will not be successful.)

⑭ **“MIDI Devices” button**

Click this button, a MIDI device select window will appear as shown in diagram 1. Please select “ICON iDJ” for the MIDI Out Devices.

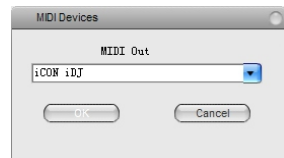


Diagram 1

Restore the factory default settings

By holding down the “C.F. Curve/Layer” more than 4sec., the settings of the iDJ will return to its factory default condition.



Daisy chain your iDJ to other i-series controllers

You may daisy chain your iDJ to other ICON i-series controllers such as iControls. iDJ would always come to the last of the chain.

- 1 Connect the first unit of i-series controller such as iControls to your Mac/PC via the USB port

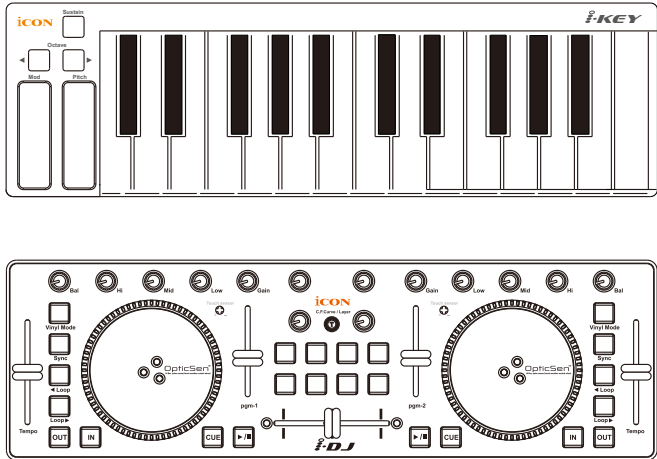
Choose a USB port on your Mac/PC and insert the wide (flat) end of the USB cable and the other small end (B-type USB pack) to iControls.

- 2 Connect to iDJ

Insert the wide (flat) end of the USB cable to the iControls's second USB port and the other small end (B-type USB jack) to the iDJ's USB port.



USB2.0 Cable



Specifications

Connector:	To computer	USB connector (mini B type)
Power supply:		USB bus power
Current consumption:		100mA or less
Weight:		0.81kg (1.8lb)
Dimensions:		325(L) X 99(W) X 20(H) 12.78"(L) x 3.78"(W) x 0.75"(H)



Services

If your iDJ needs servicing, follow these instructions.

Check our online Help Center at <http://support.iconproaudio.com/hc/en-us>, for information, knowledge, and downloads such as:

1. FAQ
2. Download
3. Learn More
4. Forum

Very often you will find solutions on these pages. If you don't find a solution, create a support ticket at our online Help Center at the link below, and our technical support team will assist you as soon as we can.

Navigate to <http://support.iconproaudio.com/hc/en-us> and then sign in to submit a ticket.

As soon as you have submitted an inquiry ticket, our support team will assist you to resolve the problem with your ICON ProAudio device as soon as possible.

To send defective products for service:

1. Ensure the problem is not related to operation error or external system devices.
2. Keep this owner's manual. We don't need it to repair the unit.
3. Pack the unit in its original packaging including end card and box. This is very important. If you have lost the packaging, please make sure you have packed the unit properly. ICON is not responsible for any damage that occurs due to non-factory packing.
4. Ship to the ICON tech support center or the local return authorization. See our service centers and distributor service points at the link below:

If you are located in US

Send the product to:

North America

Mixware, LLC – U.S. Distributor

11070 Fleetwood Street – Unit F.

Sun Valley, CA 91352; USA

Tel.: (818) 578 4030

[Contact: www.mixware.net/help](http://www.mixware.net/help)

If you are located in Hong Kong

Send the product to:

ASIA OFFICE:

Unit F, 15/F., Fu Cheung Centre,

No. 5-7 Wong Chuk Yueng

Street, Fotan,

Sha Tin, N. T., Hong Kong.

Tel: (852) 2398 2286

Fax: (852) 2789 3947

Email: info.asia@icon-global.com

If you are located in Europe

Send the product to:

Sound Service

GmbH European

Headquarter Moriz-Seeler-Stra

3D-12489 Berlin

Telephone: +49 (0)30 707 130-0

Fax: +49 (0)30 707 130-189

[E-Mail: info@sound-service.eu](mailto:info@sound-service.eu)

5. For additional update information please visit our website at: www.iconproaudio.com



天猫官方旗舰店



天猫店iconproaudio旗舰店

抖音号



抖音iCON艾肯

哔哩哔哩



B站iCONProAudio
中国地区用户

微信公众号



微信号iCON-PRO

官方售后QQ



4006311312.114.qq.com

Twitter



www.twitter.com/iconproaudio

Instagram



www.instagram.com/iconproaudio

Facebook



www.facebook.com/iconproaudio

Youtube



www.youtube.com/iconproaudio

Website



www.iconproaudio.com

Support



support.iconproaudio.com

Dashboard



iconproaudio.com/dashboard/

www.iconproaudio.com



iCON[®]

www.icon-global.com

info@icon-global.com

